



Quick Start Guide

THERMION 2

Thermal imaging riflescope

ENGLISH / FRANÇAIS / DEUTSCH / ESPAÑOL / ITALIANO / РУССКИЙ

EN **Attention!** Thermion 2 thermal imaging riflescopes require a license if exported outside your country.
Electromagnetic compatibility.
This product complies with the requirements of European standard EN 55032: 2015, Class A.
Caution! Operating this product in a residential area may cause radio interference.
This product is subject to change in line with improvements to its design.
The current version of the User's Manual can be found on the website www.pulsar-vision.com

FR **Attention!** Les viseurs d'imagerie thermique Thermion 2 nécessitent une licence s'ils sont exportés hors de votre pays.
Compatibilité électromagnétique.
Ce produit est conforme aux exigences de la norme européenne EN 55032: 2015, classe A.
Attention! L'utilisation de ce produit dans une zone résidentielle peut provoquer des interférences radio.
La configuration peut être modifiée afin d'améliorer l'utilisation de l'appareil.
La version actuelle du manuel d'utilisation est disponible sur le site www.pulsar-vision.com

DE **Achtung!** Wärmebildzielfernrohre Thermion 2 benötigen eine Lizenz, wenn sie außerhalb Ihres Landes exportiert werden.
Elektromagnetische Verträglichkeit.
Dieses Produkt entspricht den Anforderungen der Europäischen Norm EN 55032:2015, Klasse A.
Achtung! Der Betrieb dieses Produktes in Wohngebieten kann Funkstörungen verursachen.
Änderungen im Design zwecks höherer Gebrauchseigenschaften des Produktes vorbehalten.
Die aktuelle Version der Bedienungsanleitung finden Sie unter www.pulsar-vision.com.

ES **¡Atención!** Los visores de visión térmica Thermion 2 requieren una licencia si se exportan fuera de su país.
Compatibilidad electromagnética.
Este producto cumple con los requisitos de la norma europea EN 55032:2015, Clase A.
Advertencia: el uso de este producto en la zona residencial puede provocar interferencias de radiofrecuencia.
El diseño de este producto está sujeto a modificaciones con el fin de mejorar sus características de uso.
Encontrará la última edición del manual de usuario en el sitio web www.pulsar-vision.com

IT **Attenzione!** I cannocchiali termici Thermion 2 necessitano una licenza se esportati al di fuori del proprio paese.
Compatibilità elettromagnetica.
Questo prodotto è conforme ai requisiti della norma europea EN 55032:2015, Classe A.
Attenzione! l'uso di questo prodotto in un'area residenziale può causare dei radiodisturbi.
Per migliorare le proprietà del prodotto nella sua costruzione possono essere apportate delle modifiche.
La versione aggiornata delle istruzioni d'uso è disponibile sul sito www.pulsar-vision.com

RU **Внимание!** Тепловизионные прицелы Thermion 2 требуют лицензии, если они экспортируются за пределы Вашей страны.
Электromагнитная совместимость.
Данный продукт соответствует требованиям европейского стандарта EN 55032:2015, Класс А.
Внимание! Эксплуатация данного продукта в жилой зоне может создавать радиопомехи.
Для улучшения потребительских свойств изделия в его конструкцию могут вноситься усовершенствования.
Актуальную версию инструкции по эксплуатации Вы можете найти на сайте www.pulsar-vision.com

THERMION 2

Quick Start Guide

Thermal imaging rifle scope Thermion 2	4-9	ENGLISH
Viseur d'imagerie thermique Thermion 2	10-15	FRANÇAIS
Wärmebildzielfernrohr Thermion 2	16-21	DEUTSCH
Visor de generación de imágenes térmico Thermion 2	22-27	ESPAÑOL
Cannocchiale per visore termico Thermion 2	28-33	ITALIANO
Тепловизионный прицел Thermion 2	34-39	РУССКИЙ

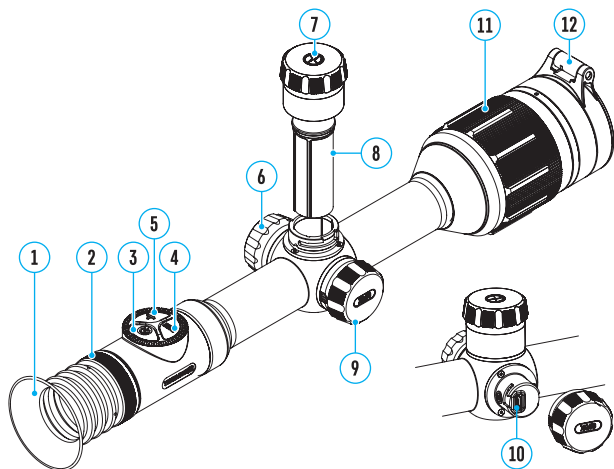


⚡ Package Contents

- Thermal imaging riflescope Thermion 2
- APS battery charger
- Mains charger
- USB cable
- APS2 Battery Pack (APS2 and APS3 for XP50 model)
- Case
- Cloth for cleaning optics
- Quick start guide
- Warranty card
- APS3 battery cover


⚡ Components and Controls

1. Eyecup
2. Eyepiece diopter adjustment ring
3. ON/OFF button
4. REC button
5. ZOOM button
6. Controller
7. Battery compartment cover
8. Battery Pack APS2
9. Micro-USB cover
10. Micro-USB port
11. Lens focus ring
12. Lens cover



⚡ Getting Started

Powering On and Image Setup

- Remove the lens cover (12)
- Turn the unit on with a short press of the ON/OFF (3) button.
- Adjust the resolution of the icons on the display by rotating the diopter adjustment ring on the eyepiece (2).
- Rotate the lens focus ring (11) to focus on the object being observed.
- Enter the main menu with a long press of the controller button (6) and select the desired calibration mode: manual (M), semi-automatic (SA) or automatic (A).
- Calibrate the image with a short press of the ON/OFF (3) button (when calibration mode SA or M has been selected). Close the lens cap before manual calibration.
- Select the required operating mode (Forest, Rocks, Identification, User) in the main menu. User mode allows you to configure and save custom brightness and contrast settings, as well as one of three modes as a base.
- Activate the quick menu by briefly pressing the controller button (6) to adjust the brightness and contrast of the display (see the Quick Menu Functions section of the full version manual for details).
- Press the ZOOM (5) button successively to change the magnification ratio of the riflescope. While the icon  is visible on the screen, rotate the controller ring (6) for smooth digital zooming from the current magnification.
- Power the device off with a long press of the ON/OFF (3) button.

⚡ Button Operation

Button	Short press	Long press	Rotation
ON/OFF button (3)	Turn on device / Turn on display / Microbolometer calibration	Turn off device / Turn off display	
REC button (4)	Start/Pause/Resume video recording / Capture a photo	Toggle between photo/video mode Stop video recording	
ZOOM button (5)	Zoom	PiP on/off	
Controller (6)	Enter quick menu / Switch between quick menu items / Confirm selection	Exit quick menu / Enter/exit main menu	Parameter change / Main menu navigation

⚡ Mounting on the Weapon

The Thermion 2 riflescope must be properly mounted on the rifle to ensure accurate shooting.

The riflescope is fixed using the mount, which is purchased separately according to the type of gun. Use only high-quality mounts and rings that are designed specifically for your gun.

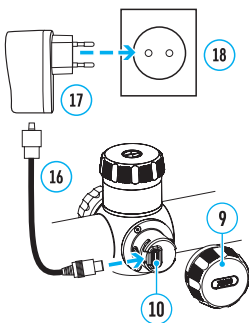
The scope should be set as low as possible but should not come into contact with the barrel or receiver.

Before securing the fastening rings, ensure that the riflescope provides the necessary distancing of the exit pupil and enables you to see the full field of vision.

⚡ Charging the Batteries

Thermion 2 thermal imaging riflescopes come with a built-in rechargeable lithium-ion Battery Pack APS3 and a removable rechargeable lithium-ion APS2 Battery Pack (APS2 and APS3 for XP50 model). The batteries should be charged before first use.

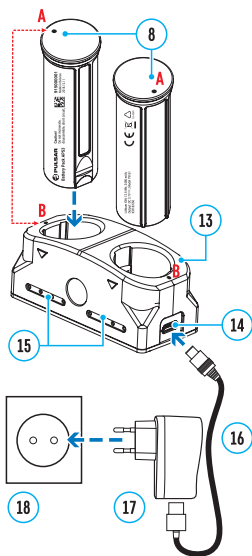
- Open the microUSB cover (9) by turning it counter clockwise.
- Attach the microUSB plug of the USB cable (16) to the microUSB socket (10) in the body of the riflescope.
- Attach the second plug of the USB cable (16) to the USB port on the mains adapter (17). Plug the device into a 100–240 V power outlet (18).



WARNING. When charging batteries via the microUSB connector (10) in the body casing of the riflescope, the built-in Battery Pack is the first to be charged. Once it is fully charged, the removable Battery Pack begins charging. When the device is in use, power consumption occurs in reverse order.

The rechargeable lithium-ion APS2 and APS3* Battery Packs may be recharged using the APS** charger.

- Fully insert the rechargeable Battery Pack (8) supplied with your device, or purchased separately, along the guide rail into the APS charger slot (13).
- Point A on the battery and Point B on the charger should be aligned.
- Two batteries* can be charged at the same time – a second slot is provided for this.
- Attach the microUSB plug of the USB cable (16) to the socket (14) of the battery charger (13). Plug the adapter into a 100–240 V power outlet (18).
- Attach the second plug of the USB cable (16) to the USB port on the mains adapter (17).
- The LED indicator (15) will display the battery charge status (see Table).



LED Indicator***	Battery charge status
●	Battery charge from 0 to 10%. Charger not connected to the mains power supply
★	Battery charge from 0 to 10%. Charger connected to the mains power supply
●●●●	Battery defective. Do not use the battery!
●	Battery charge from 10 to 20%
●●	Battery charge from 20 to 60%
●●●	Battery charge from 60 to 95%
●●●●	Battery completely charged. Can be disconnected from the charger

* Available separately for XQ models.

** Included in the delivery package.

*** The LED indicator displays the current level of charge of the battery for 30 seconds when the APS charger is not plugged in. When the power is connected, the display shows the current status of the battery constantly, the LEDs additionally flickering to indicate the battery charging process.

⚡ Installing the Removable Battery

- Turn the battery cover (7) counter clockwise and remove.
- Install the battery (8) into the battery compartment along the special guides in the device casing designed for it.
- When properly installed, the battery is locked into the slot with a special clip.
- Replace the battery compartment cover (7), turning it clockwise

⚡ Stream Vision App

Download the Stream Vision app to stream the image (via Wi-Fi) from your device to a smartphone or tablet, to view recorded files and update the software on the device. A detailed user guide is available at pulsar-vision.com



Specifications

MODEL	XQ38	XQ50	XP50
SKU	76545	76546	76544
MICROBOLOMETER			
Type	uncooled		
Resolution, pixels	384x288	384x288	640x480
Pixel size, microns	17		
Frame refresh rate, Hz	50		
OPTICAL SPECIFICATIONS			
Lens, mm	F35 F/1.0	F50 F/1.0	F50 F/1.0
Magnification, x	2.5-10	3.5-14	2-16
Eye relief, mm/inch	50/1.96		
Field of view (H), °/m@100	10.7/18.7	7.5/13.1	12.4/21.8
Diopter adjustment, D	-3/+5		
Detection distance (Object of "deer" type), m/y	1350/1475	1800/1970	
AIMING RETICLE			
Click value (H/V), mm@100 m – when magnifying, x	18 – 2.5x 9 – 5x 4.5 – 10x	13 – 3.5x 6.5 – 7x 3.25 – 14x	21 – 2x 10.5 – 4x 5.25 – 8x 2.6 – 16x
Click range, mm@100 m (H/V)	3600/3600	2600/2600	4200/4200
DISPLAY			
Type	AMOLED		
Resolution, pixels	1024x768		
OPERATING FEATURES			
Diameter of the riflescope body to assemble the mounting rings, mm	30		
Power Supply, V	3–4.2		
Battery type / Capacity / Rated Output Voltage	Li-Ion Battery Pack APS2 / 2000 mAh / DC 3.7 V (removable) or Li-Ion Battery Pack APS3 / 3200 mAh / DC 3.7 V (removable)* Li-Ion Battery Pack APS3 / 3200 mAh / DC 3.7 V (built-in)		
External Power Supply	Micro USB type B (5 V)		
Battery Packs (built-in APS3 and removable APS2) operating time at temp. = 22 °C (Wi-Fi off), hrs	7		
Max. recoil power on rifled weapon, Joules	6000		
Max. recoil power on smooth-bore weapon, caliber	12		
Degree of protection IP code (IEC60529)	IPX7		

Operating temperature, °C / °F	-25 – +50 / -13 – +122		
Dimensions with an eyecup, mm/inch	399x78x83 / 15.7x3.07x3.27	412x78x83 / 16.22x3.07x3.27	416x78x83 / 16.38x3.07x3.27
Weight (without removable battery), kg/oz	0.9 / 31.75		
VIDEO RECORDER			
Photo / video resolution, pixels	1024x768		
Video / photo format	.mp4 / .jpg		
Built-in memory	16 GB		
WI-FI CHANNEL			
Frequency	2.4 GHz		
Standard	802.11 b/g		
Line-of-sight reception range**, m/y	up to 15/16.4		

* Available separately for XQ models.

**The reception range may vary depending on various factors: obstacles, other Wi-Fi networks.

The device repair is possible within 5 years.